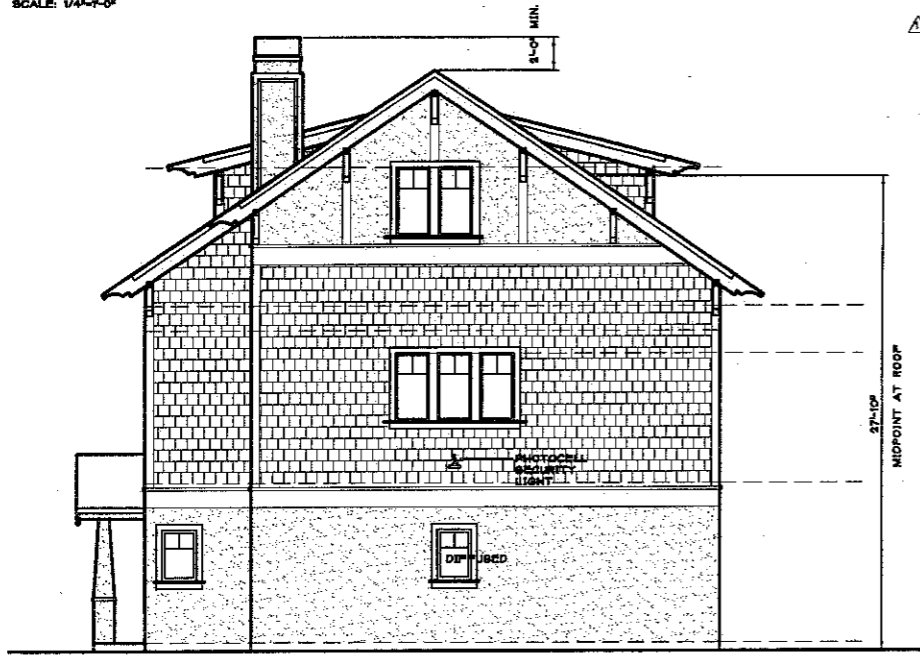




NORTH ELEVATION UNIT 1-4

SCALE: 1/4"=1'-0"



WEST ELEVATION UNIT 4

SCALE: 1/4"=1'-0"

EXTERIOR MATERIALS

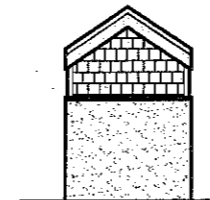
ROOFING: LIGHTWEIGHT CONCRETE MANUF BY FIREFREE STYLE QUARRY SLATE. CONTINUOUS RIDGE VENT TYPICAL. INSTALLATION SHALL BE IN ACCORDANCE WITH MANUFACTURERS SPECIFICATIONS. ICBO C84 5075 NERS 534

SIDING: STUCCO AND WOOD SHINGLES TRM 06 SMOOTH FACE PAINT-GRADE GARAGE DOORS: GARAGE DOORS INC, STYLE: PHOENIX

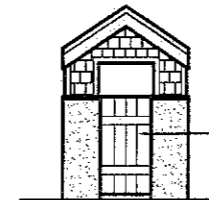
WINDOWS: MANUF "MARVIN" WOOD W/FIBERGLASS CLADDING

ALL EXTERIOR SECURITY LIGHTING ON PHOTO CELL AND/OR MOTION SENSOR AND ON SEPARATE METER.

ALL EXTERIOR DRIVEWAY AND ENTRY LIGHTING TO BE HOODED AND DIRECTED DOWNWARD.

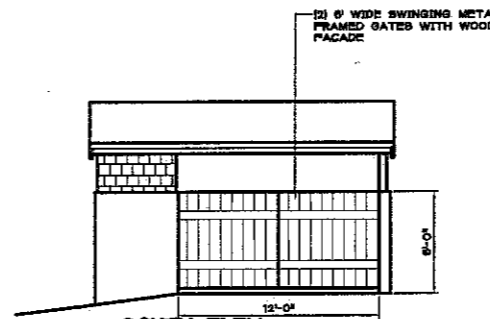


EAST ELEV.



WEST ELEV.

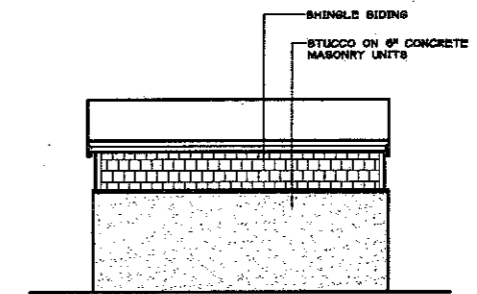
3' WIDE X 8' TALL METAL FRAMED GARAGE DOOR WITH WOOD FACADE



SOUTH ELEV.

TRASH ENCLOSURE

SEE SHEET A12 FOR TRASH ENCLOSURE DETAILS



NORTH ELEV

©Trash Enclosure Division

REVISIONS	BY
1	KB
2	
3	
4	
5	

Sreeter Group, Inc.
 Architecture, Structural Engineering
 2371 Main Street, Suite C, San Jose, CA 95128
 Phone: (408) 977-1151 www.sreetergroup.com



SEABRIGHT MEADOWS CONDOS
 627/628 SEABRIGHT AVENUE, SANTA CRUZ
 OWNERS: BRADLEY/DEL MONTE LLC A.P.N. 010-192-15



UNIT 1-4
NORTH ELEVATION
WEST ELEVATION

DATE: 02-15-08
 SCALE: AS NOTED
 DRAWN BY: KB
 CHECK BY: BSB
 CAD FILE: A7
 JOB NO: 07084
 SHEET
A7
 OF 40 SHEETS



SOUTH ELEVATION UNIT 1-4
SCALE: 1/4"=1'-0"

ALL DOWNSPOUTS TERMINATE AT PAVED SURFACE TO BE DIRECTED TO ON-SITE STORM DRAIN SYSTEM, OR VIA 4" DIA. UNDERGROUND DRAIN PIPE TO SUB-GRADE STORM DRAIN SYSTEM. SEE SHEET C3 OF CIVIL SHEETS FOR DRAINAGE LOCATION, NOTES, AND SPECIFICATIONS.



EAST ELEVATION UNIT 1
SCALE: 1/4"=1'-0"

REVISIONS	BY
1	8-16-08 KB
2	
3	
4	
5	
6	

Streeter Group, Inc.
Architecture, Structural Engineering
3371 Main Street, Suite C, Escondido, CA 92029
Phone: (831) 875-1781 www.streetergroup.com



SEABRIGHT MEADOWS CONDOS
627/828 SEABRIGHT AVENUE, SANTA CRUZ
OWNERS: BRADLEY/DEL MONTE LLC A.P.N. 010-192-15



UNIT 1-4
SOUTH ELEVATION
EAST ELEVATION

DATE:	02-16-08
SCALE:	AS NOTED
DRAWN BY:	KB
CHECK BY:	BBS
CAD FILE:	AS
JOB NO.:	07054
SHEET	AB
OF 40 SHEETS	



THIRD LEVEL FLOOR

ALL DOWNSPOUTS TERMINATE AT PAVED SURFACE TO BE DIRECTED TO ON-SITE STORM DRAIN SYSTEM, OR VIA 4" DIA. UNDERGROUND DRAIN PIPE TO SUB-GRADE STORM DRAIN SYSTEM. SEE SHEET C5 OF CIVIL SHEETS FOR DRAINAGE LOCATION, NOTES, AND SPECIFICATIONS.

SECOND LEVEL FLOOR

FIRST LEVEL FLOOR

EAST ELEVATION UNIT 5-6

SCALE: 1/4"=1'-0"

EXTERIOR MATERIALS

ROOFING: LIGHTWEIGHT CONCRETE MANUF BY FIREPROOF STYLE: QUARRY SLATE
 SIDING: STUCCO AND WOOD SHINGLES
 TRIM: O/S SMOOTH FACE PAINT-GRADE
 GARAGE DOORS: GARAGE DOORS INC, STYLE: "PHOENIX"
 WINDOWS: MANUF, "MARVIN" WOOD W/PIEDIGLASS CLADDING
 ALL EXTERIOR SECURITY LIGHTING ON PHOTO CELL AND/OR MOTION SENSOR AND ON SEPARATE METER.
 ALL EXTERIOR ENTRY LIGHTING AND DRIVEWAY LIGHTING TO BE HOODED AND DIRECTED DOWNWARD.



THIRD LEVEL FLOOR

6' HIGH SOLID RAIL

SECOND LEVEL FLOOR

FIRST LEVEL FLOOR

NORTH ELEVATION UNIT 5-6

SCALE: 1/4"=1'-0"

REVISIONS	BY
5-16-08	KS
11-23-10	KB

Sirester Group, Inc.
 Architects, Structural Engineering
 2371 North Street, Suite C, Redwood, CA 94073
 Phone: (415) 477-7387 www.sirestergroup.com



SEABRIGHT MEADOWS CONDOS

6277629 SEABRIGHT AVENUE, SANTA CRUZ
 OWNERS: BRADLEY/DEL MONTE LLC A.P.N. 010-102-15



**UNITS 5-6
 NORTH ELEVATION
 EAST ELEVATION**

DATE: 02-15-08
 SCALE: AS NOTED
 DRAWN BY: KS
 CHECK BY: BBS
 CAD FILE: A9
 JOB NO: 07054
 SHEET
A9
 OF 40 SHEETS



WEST ELEVATION UNIT 5-6

SCALE: 1/4"=1'-0"



SOUTH ELEVATION UNIT 5-6

SCALE: 1/4"=1'-0"

ALL DOWNSPOUTS TERMINATE AT PAVED SURFACE TO BE DIRECTED TO ON-SITE STORM DRAIN SYSTEM, OR VIA 4" DIA. UNDERGROUND DRAIN PIPE TO SUB-GRADE STORM DRAIN SYSTEM. SEE SHEET C5 OF CIVIL SHEETS FOR DRAINAGE LOCATION, NOTES, AND SPECIFICATIONS.

REVISIONS	BY
▲ 8-16-08	KS
▲	
▲	
▲	
▲	

Sireeter Group, Inc.
 Architecture, Structural Engineering
 2421 Main Street, Suite C, San Jose, CA 95128
 Phone: (415) 277-7121 www.sireetergroup.com

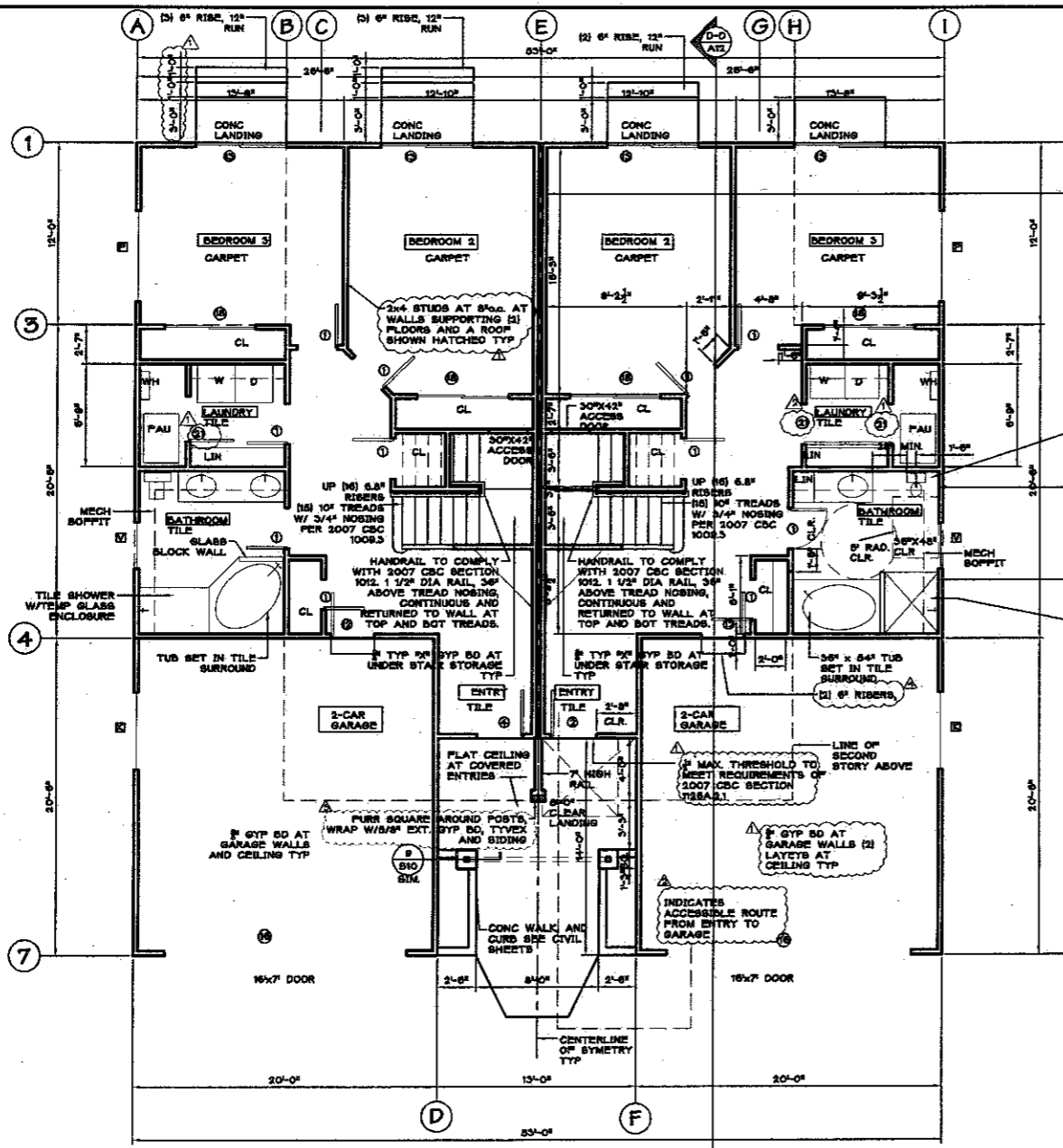


SEABRIGHT MEADOWS CONDOS
 627/628 SEABRIGHT AVENUE, SANTA CRUZ
 OWNERS: BRADLEY/DEL MONTE LLC A.P.N. 010-182-15



UNITS 5-6
SOUTH ELEVATION
WEST ELEVATION

DATE:	02-16-08
SCALE:	AS NOTED
DRAWN BY:	KS
CHECK BY:	DSS
CAD FILE:	A10
JOB NO:	07064
SHEET	A10
OF 40 SHEETS	



NOTE:
1. PROVIDE LAMINATED HOOKS AT ALL GARAGES FOR HANGING BICYCLE STORAGE TYP.

UNIT 5-6 FIRST LEVEL FLOOR PLAN

SCALE: 1/4"=1'-0"
804 SQ. FT. CONDITIONED IN-CO. PLANT
418 SQ. FT. GARAGE



TYPICAL 2-HR PARTY WALL ASSEMBLY
 (1) 2X4 STUDS AT 16" O.C. W/IF AIR SPACE
 PLYWOOD PER SHEAR SCHEDULE
 (2) SUPPRESS SOUND-ENGINEERED DRYWALL INTERIOR
 (3) TYP 5/8" GYP BD, EXTERIOR SIDE
 (4) INSULATION CAVITY

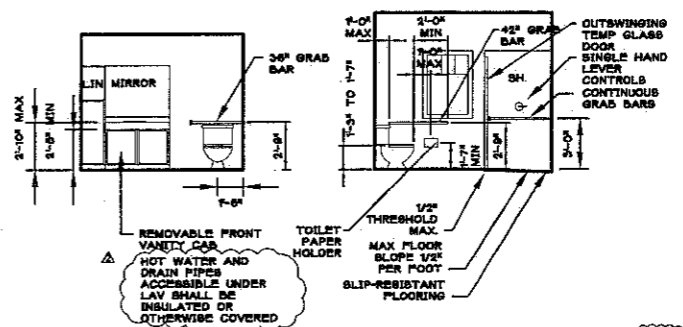
SEE DETAIL 1A4 FOR INTERIOR BATHROOM ELEVATIONS
 TOILET AND LAV TO COMPLY PER 2007 CBC SECTIONS 13-4A.7, 13-4A.8

SOLID REINFORCING AT SIDE AND REAR WALL OF TOILET AREA 32"-36" HIGH, EXTEND MIN. 24" IN FRONT OF TOILET. REAR OF TOILET REINFORCING MUST BE 6" MIN IN HEIGHT, AND MIN 40" IN LENGTH

REINFORCE WALL FOR GRAB BARS PER 2007 CBC SECTION 13-4A.7, 13-7A.4

SOLID REINFORCING FOR GRAB BARS AT BOTH SHOWER WALLS 32"-36" HIGH

ROLL-IN SHOWER PER CBC 13-4A.6 MIN 42" X48" WITH SLIP-RESISTANT FLOORING, TEMP GLASS DOOR



INTERIOR ELEVATIONS BATHROOM

SCALE: 1/4"=1'-0"

NOTE: ALL GRAB BAR REINFORCING TO BE MIN 6" NOMINAL IN HEIGHT. GRAB BARS NEED NOT BE INSTALLED PER THIS "ADAPTABLE" BATHROOM, BUT ALL REINFORCING MUST BE IN PLACE.

REVISIONS	BY
9-15-08	KB
8-27-08	KB
11-25-08	KB
10-22-10	KB
11-23-10	KB

Streeter Group, Inc.
 Architecture, Structural Engineering
 2471 Main Street, Suite C, Redland, CA 94072
 Phone: (415) 477-1721 www.streetergroup.com

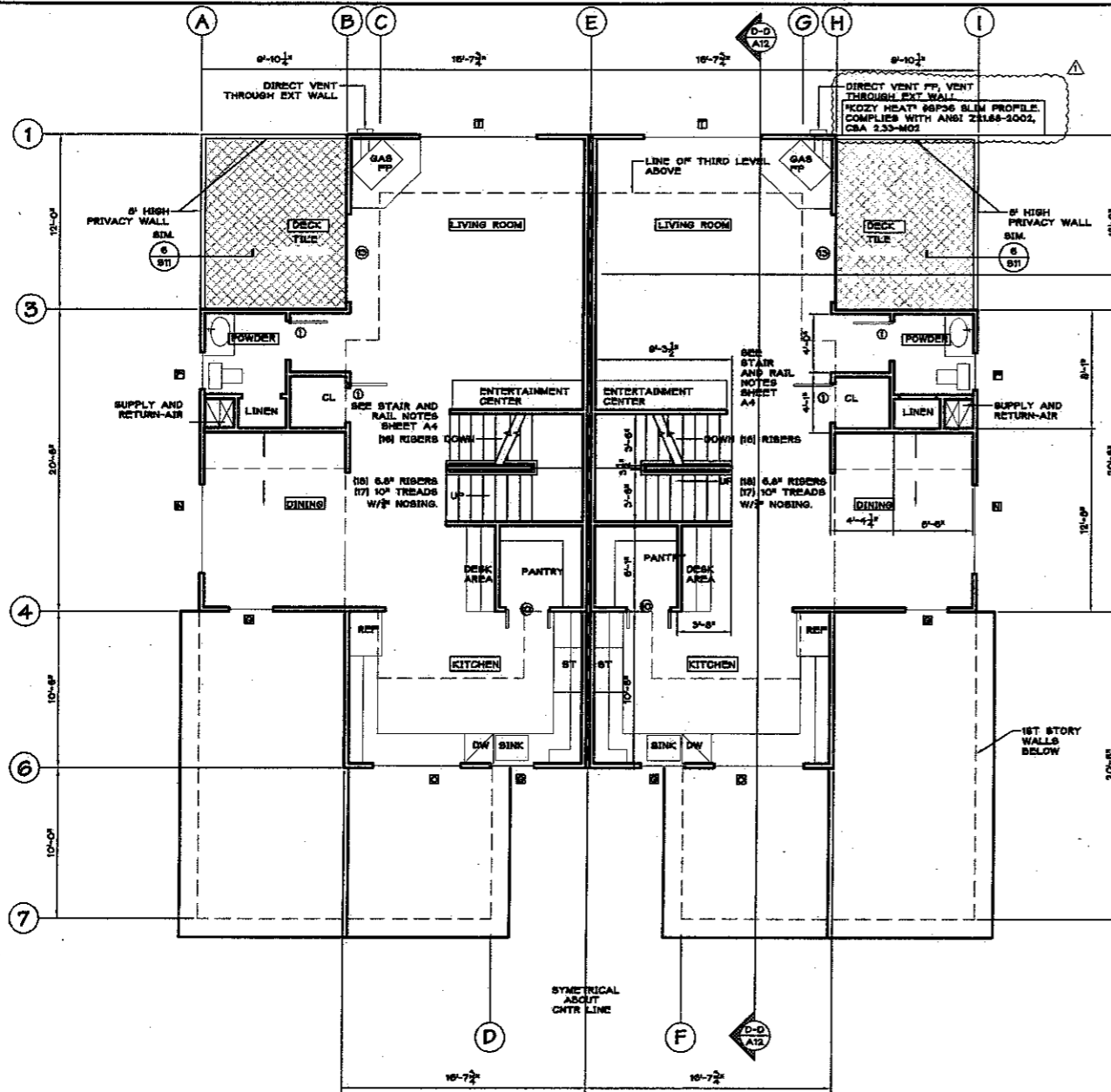


SEABRIGHT MEADOWS CONDOS
 627/828 SEABRIGHT AVENUE, SANTA CRUZ
 OWNERS: BRADLEY/DEL MONTE LLC A.P.N. 010-192-16



UNITS 5-6 FIRST LEVEL PLAN

DATE:	02-15-08
SCALE:	AS NOTED
DRAWN BY:	KB
CHECK BY:	DBB
CAD FILE:	A4
JOB NO.:	07084
SHEET:	A4
OF 40 SHEETS	



UNIT 5-6 SECOND LEVEL FLOOR PLAN

SCALE: 1/4"=1'-0"
 816 SQ. FT. CONDITIONED (87'-0" PLHT)
 116 SQ. FT. COVERED DECK

TYPICAL 2-HR PARTY WALL ASSEMBLY
 2x4 STUDS AT 16" O.C. W/P AIR SPACE
 PLYWOOD PER SHEAR SCHEDULE
 SUPPRESS SOUND-ENGINEERED DRYWALL INTERIOR
 TYP 5/8" GYP. BD. EXTERIOR SIDE
 R-13 INSULATION CAVITY

REVISIONS	BY
1-15-08	KB
11-25-08	KB

Streeter Group, Inc.
 Architecture, Structural Engineering
 2071 Main Street, Suite C, San Jose, CA 95078
 Phone: (415) 977-7171 Fax: (415) 977-7172

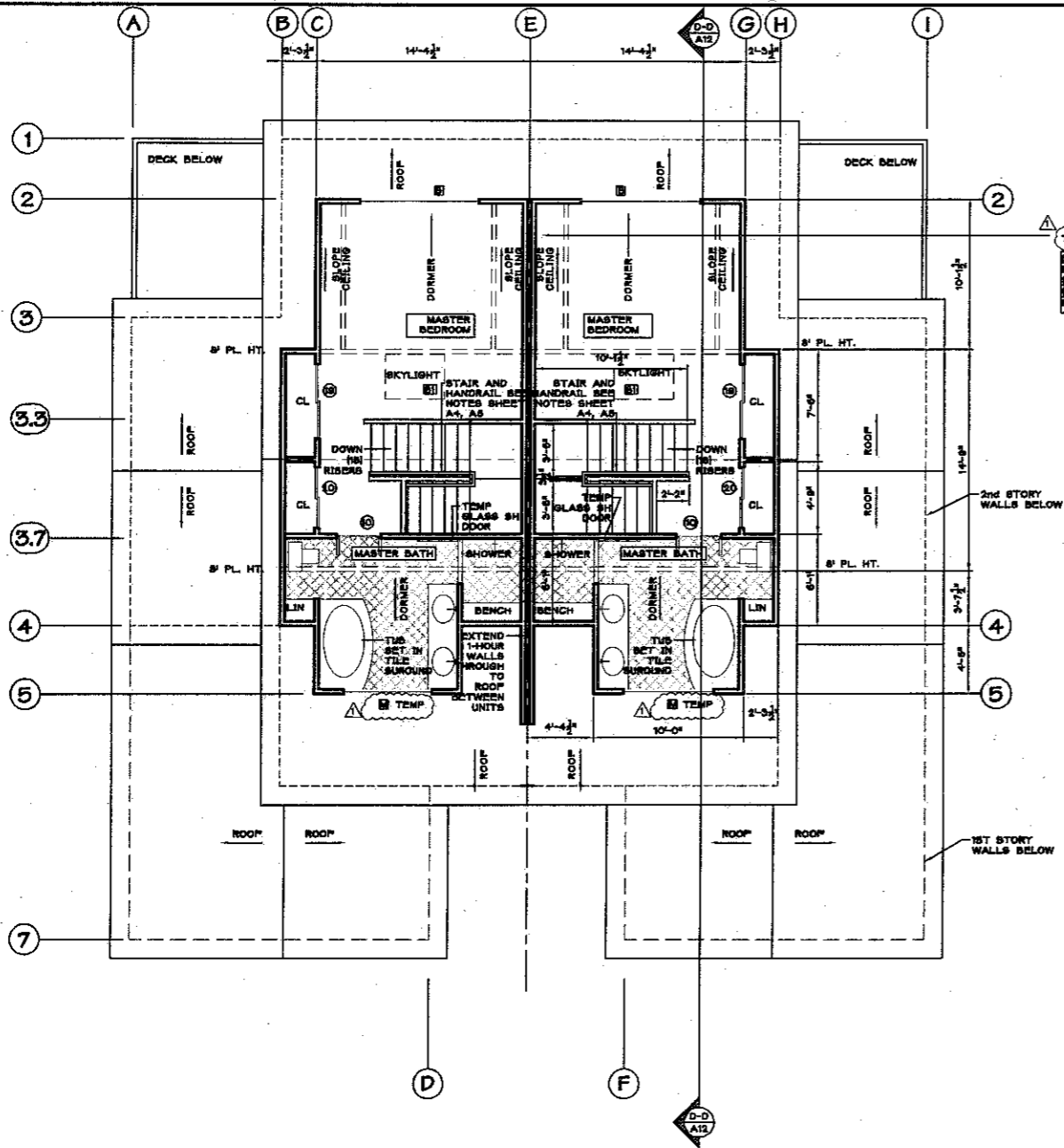


SEABRIGHT MEADOWS CONDOS
 627/628 SEABRIGHT AVENUE, SANTA CRUZ
 OWNERS: BRADLEY/DEL MONTE LLC A.P.N. 010-192-15



**UNIT 5-6
 SECOND LEVEL PLAN**

DATE:	02-15-08
SCALE:	AS NOTED
DRAWN BY:	KS
CHECK BY:	BBB
CAD FILE:	A5
JOB NO:	07064
SHEET	A5
OF 40 SHEETS	



TYPICAL 2-HR PARTY WALL ASSEMBLY
 2) 2x4 STUDS AT 16" O.C. W/1" AIR SPACE
 PLYWOOD PER SHEAR SCHEDULE
 3) SUPPRESS SOUND-ENGINEERED DRYWALL INTERIOR
 4) TYP 5/8" GYP SD, EXTERIOR SIDE
 5) INSULATION CAVITY

UNIT 5-6 THIRD LEVEL FLOOR PLAN
 SCALE: 1/4"=1'-0"
 480 SQ. FT. CONDITIONED (8'-0" PL.HT.)

REVISIONS	BY
△ 8-15-08	KB
△ 11-25-08	KB
△	
△	

Siretzer Group, Inc.
 Architecture, Structural Engineering
 2871 Main Street, Suite C, Sausalito, CA 94965
 Phone: (415) 477-1211 www.siretzer.com



SEABRIGHT MEADOWS CONDOS
 627/628 SEABRIGHT AVENUE, SANTA CRUZ
 OWNERS: BRADLEY/DEL MONTE LLC A.P.N. 010-182-15



**UNIT 5-6
 THIRD LEVEL PLAN**

DATE: 02-15-08
SCALE: AS NOTED
DRAWN BY: KB
CHECK BY: BSB
CAD FILE: A6
JOB NO: 07054
SHEET
A6
OF 40 SHEETS