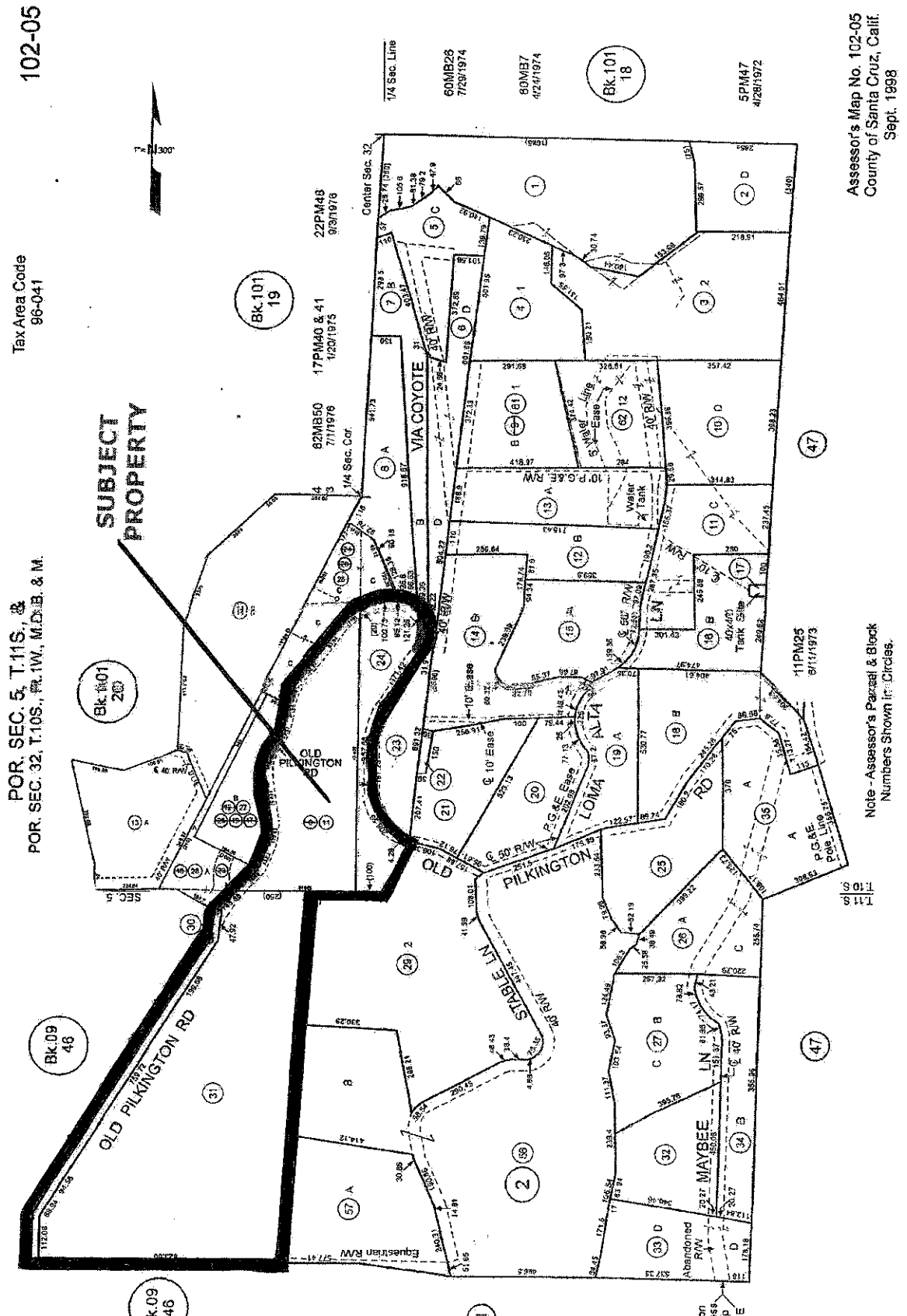


**FOR TAX PURPOSES ONLY**  
 THE ASSESSOR MAKES NO GUARANTEE AS TO MAP ACCURACY NOR ASSUMES ANY LIABILITY FOR OTHER USES. NOT TO BE REPRODUCED. ALL RIGHTS RESERVED.  
 © COPYRIGHT SANTA CRUZ COUNTY ASSESSOR 1998

27PM68 12/21/1977  
 23PM75 12/21/1975  
 42PM68 6/28/1983  
 Amended 21PM27 5/27/1976  
 1 Non Access Strip

Revised 1/19/96 (S. 150, Planning Dept., 5/2 & 5/7 as per 4/2/95)  
 Re: 91539 K&A (Per. to Pg. 47)  
 Re: 82701 (Per. managed page 101)  
 Re: 82701 (Per. managed page 101)  
 Re: 81002 (Per. Santa Cruz City Redesign)  
 Re: 81002 (Per. Santa Cruz City Redesign)  
 Re: 81002 (Per. Santa Cruz City Redesign)



Tax Area Code  
 96-041

102-05

POR. SEC. 5, T.11S., E.  
 POR. SEC. 32, T.10S., R.1W., M.D.B. & M.

**SUBJECT  
 PROPERTY**

Assessor's Map No. 102-05  
 County of Santa Cruz, Calif.  
 Sept. 1998

Note - Assessor's Parcel & Block  
 Numbers Shown in Circles.